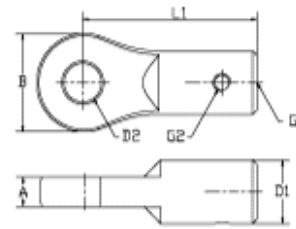


**REMOVABLE EYE SYSTEM****INSIDE THREAD EYES**[download pdf \(50 Kb.\)](#)

High Polished Stainless Steel - AISI 316



Cat. No.	G1 (inch.)	G2	L1 (mm.)	A (mm.)	B (mm.)	D1 (mm.)	D2 (mm.)	Break Load (Kg.)	Pack (Pcs.)
511908A	5/16"	M4	39,5	6,5	21,7	14	8,5	2.350	BULK
511910A	3/8"	M4	41	9	21	15	9,8	3.500	BULK
511911A	7/16"	M4	58	10	24	18	11,2	4.700	BULK
511912A	1/2"	M4	60	11,5	29	20	13	5.400	BULK
511916A	5/8"	M6	88	14	35	28	16,5	10.000	BULK
511920A	3/4"	M6	99	18	40	30	19,5	13.000	BULK

Note: All breakloads are determined by clevis pin (D2) & thread.  
The user is responsible for choosing the proper cable diameter and for correct assembly.

[back](#)