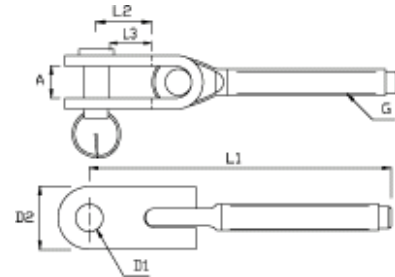


THREAD TOGGLES

[download pdf \(50 Kb.\)](#)

High Polished Stainless Steel - AISI 316



Cat. No. RIGHT	Cat. No. LEFT	G (U.N. F.)	A (mm.)	D1 (mm.)	D2 (mm.)	L1 (mm.)	L2 (mm.)	L3 (mm.)	Break Load (Kg.)
023206AB	033206AB	1/4"	8	6,5	14	88	16	12,8	1.300
023208AB	033208AB	5/16"	10	8	18	105	20	16	2.350
023210AB	033210AB	3/8"	12	9,5	22	126	24	19,3	3.500
023211AXB	033211AXB	7/16"	15	11	30	142	28	22,5	4.700
023212AXB	033212AXB	1/2"	18	12,7	30	147	31	24,7	5.400
023216AXB	033216AXB	5/8"	20	16	35	199	37	29,1	8.000
023220AXB	033220AXB	3/4"	24	19	40	225	40	30,5	13.000
023222AXB	033222AXB	7/8"	26	22	50	267	46	34,9	17.000
023225AXB	033225AXB	1"	29	25,4	60	311	53	40,3	24.000
023227AXB	033227AXB	1-1/8"	34	28	60	343	60	46,5	27.000
023230AXB	033230AXB	1-1/4"	40	32	75	379	70	54	31.000
023236AXB	033236AXB	1-3/8"	44	36	75	415	80	62	43.000

Note: All breakloads are determined by clevis pin and thread.
The user is responsible for choosing the proper cable diameter and for correct assembly.

[back](#)